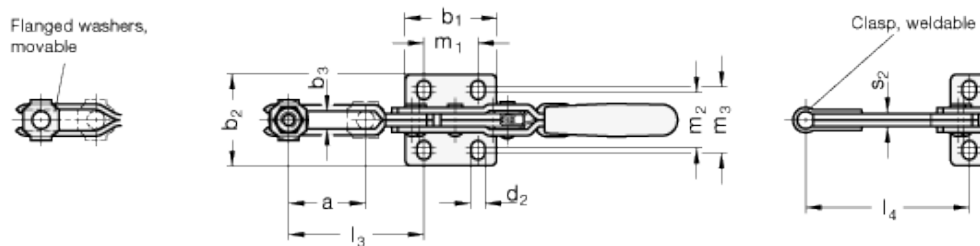
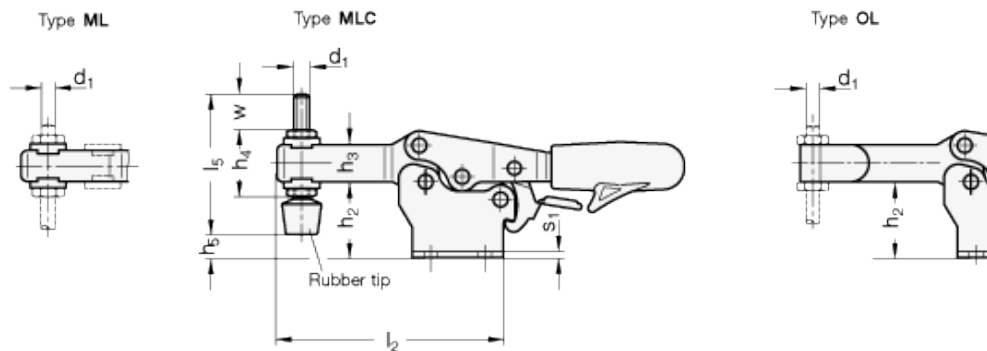
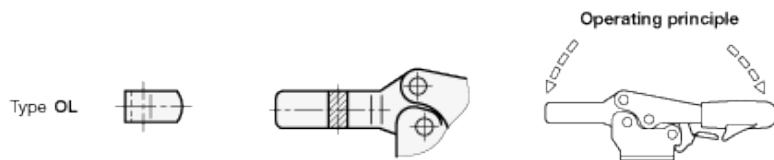
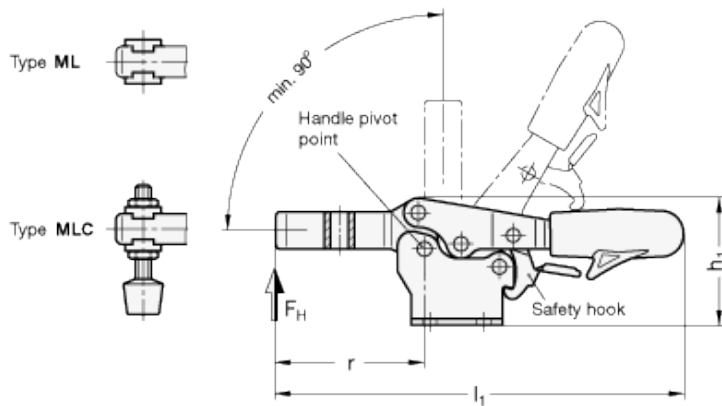


GN 820.3

Horizontal clamps





technical informations

Specificaiton

Types

- Type ML: U-bar Version, with two flanged washers
- Type MLC: U-bar Version, with two flanged washers and GN 708.1 spindle assembly
- Type OL: Solid bar Version, with clasp

Steel

- Case hardened Steel C10, zinc plated, blue passivated
- Bearing Pins tempered
- Bearing rivets (for size 355 and up), case-hardened lubricated with Special grease

Hand grip

High Quality, oil resistant red plastic

Spindle assembly GN 708.1 (Type A) - Steel, zinc plated

- Rubber tip 85 Shore A

Information

GN 820.3 horizontal acting toggle clamps have a safety function whereby, during closing, a spring loaded safety hook latch ensures a secure locking connection. It prevents the inadvertent unlocking of the clamp due to vibrations or an accidental attempt of loosening / opening of the clamp. To open and release the clamp, pull up on the finger grip to disengage the safety hook latch mechanism (one hand operation).

They work according to the toggle principle: lever and clamping bar move in the opposite direction. They require less space for the clamping action.

Horizontal acting toggle clamps in the U-bar version with two flanged washers (Type ML) can accommodate an application specific clamping screw. A spindle assembly with neoprene rubber tip is also included for Type MLC.

Type OL version can either be utilized by welding the clasp which can then accommodate an application specific hold-down fastener component, or by utilizing the bar in conjunction with the GN 809 Clamp Mounts to hold the work piece in place.

Accessory

- Spindle assemblies
- GN 801 Clamp Mounts for Toogle Clamps (for Type ML)
- GN 809 Clamp Mounts for Toogle Clamps (for Type OL)

Standard Elements	Main dimensions	Weight
-------------------	-----------------	--------

Description	Size	F _H	in	N	a	b ₁	b ₂	b ₃	d ₁	d ₂	h ₁	h ₂	h ₃	h ₄	h ₅	l ₁	l ₂	l ₃	l ₄ max.	l ₅	m ₁	m ₂	m ₃	r	s ₁	s ₂	w
GN 820.3-75-ML	75	900	20	28	26	5.3	M5	4.5	37	20	11	-	-	-	118	67	40	-	-	13.5	16	19	43	2	-	-	
GN 820.3-130-ML	130	2000	32	36	40	6.3	M6	5.6	51	30.5	16	-	-	-	172	92	53	-	-	26	22.4	28.4	62	2.5	-	-	
GN 820.3-230-ML	230	1700	37	44	44	8.5	M8	6.6	61.5	36.5	18	-	-	-	196	109	63.5	-	-	26	26	31.5	72	3	-	-	
GN 820.3-355-ML	355	1800	58	60	58	10.5	M10	8.6	83	50	22	-	-	-	270	160	96	-	-	41	38.8	43	108.5	3.5	-	-	
GN 820.3-455-ML	455	3200	65	70	65	12.5	M12	8.7	99	60	26	-	-	-	306	184	116	-	-	41.5	40	43	126	4	-	-	
GN 820.3-75-MLC	75	900	-	28	26	-	M5	4.5	37	20	-	19	5	118	67	-	-	-	45	13.5	16	19	43	2	-	15	
GN 820.3-130-MLC	130	2000	-	36	40	-	M6	5.6	51	30.5	-	25.5	14	172	92	-	-	-	55	26	22.4	28.4	62	2.5	-	17.5	
GN 820.3-230-MLC	230	1700	-	44	44	-	M8	6.6	61.5	36.5	-	30	12.5	196	109	-	-	-	68	26	26	31.5	72	3	-	20	
GN 820.3-355-MLC	355	1800	-	60	58	-	M10	8.6	83	50	-	37	23.5	270	160	-	-	-	77	41	38.8	43	108.5	3.5	-	19	
GN 820.3-455-MLC	455	3200	-	70	65	-	M12	8.7	99	60	-	43	27.5	306	184	-	-	-	100	41.5	40	43	126	4	-	33	
GN 820.3-75-OL	75	900	-	28	26	-	M5	4.5	37	20	-	-	-	-	44	9	-	49.5	-	13.5	16	19	43	2	4	-	
GN 820.3-130-OL	130	2000	-	36	40	-	M6	5.6	51	30.5	-	-	-	-	172	92	-	64	-	26	22.4	28.4	62	2.5	5	-	
GN 820.3-230-OL	230	17000	-	44	44	-	M8	6.6	61.5	36.5	-	-	-	-	196	109	-	78	-	26	26	31.5	72	3	6	-	
GN 820.3-355-OL	355	1800	-	60	58	-	M10	8.6	83	50	-	-	-	-	160	-	115	-	41	38.8	43	108.5	3.5	7	-		
GN 820.3-455-OL	455	3200	-	70	65	-	M12	8.7	99	60	-	-	-	-	306	184	-	135	-	-	41.5	40	43	126	4	10	



STANDARD MACHINE ELEMENTS WORLDWIDE